

Monitoring Brazilian Amazon, challenges and future perspectives

BiomassBR Program



CLÁUDIO ALMEIDA

COORDINATOR OF MONITORING PROGRAM FOR AMAZON AND OTHER BIOMES

Amazon biome



Largest forest in the world

>> More than 3 Million km² of Forest

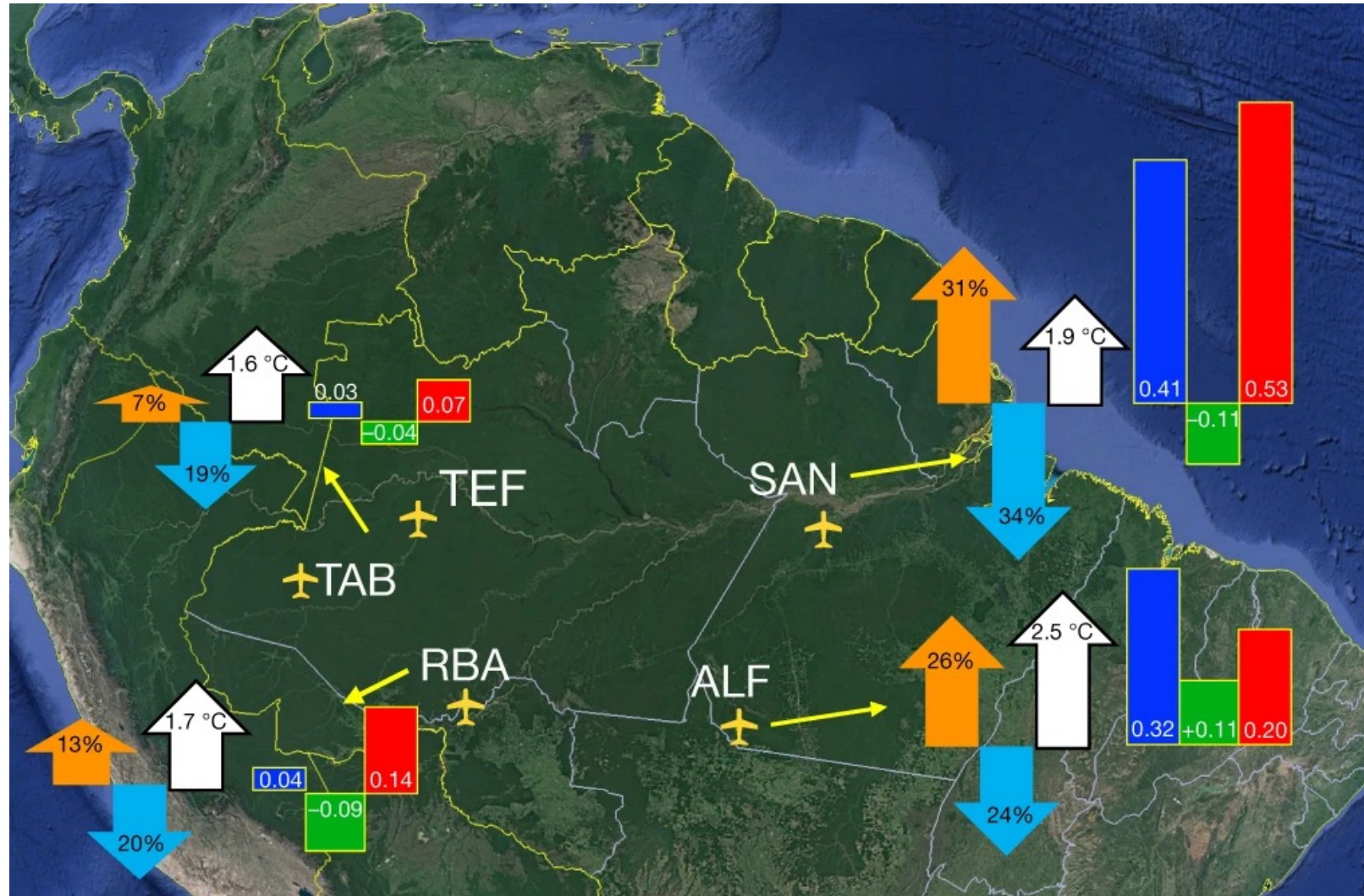
> More than 20% of the world's biodiversity






> 50 mil km² of the agricultural surface



41% of the Brazilian cattle herd



 Deforestation
 Precipitation ASO
 Temperature ASO

Total C flux (g C m⁻² d⁻¹)

NBE C flux (g C m⁻² d⁻¹)

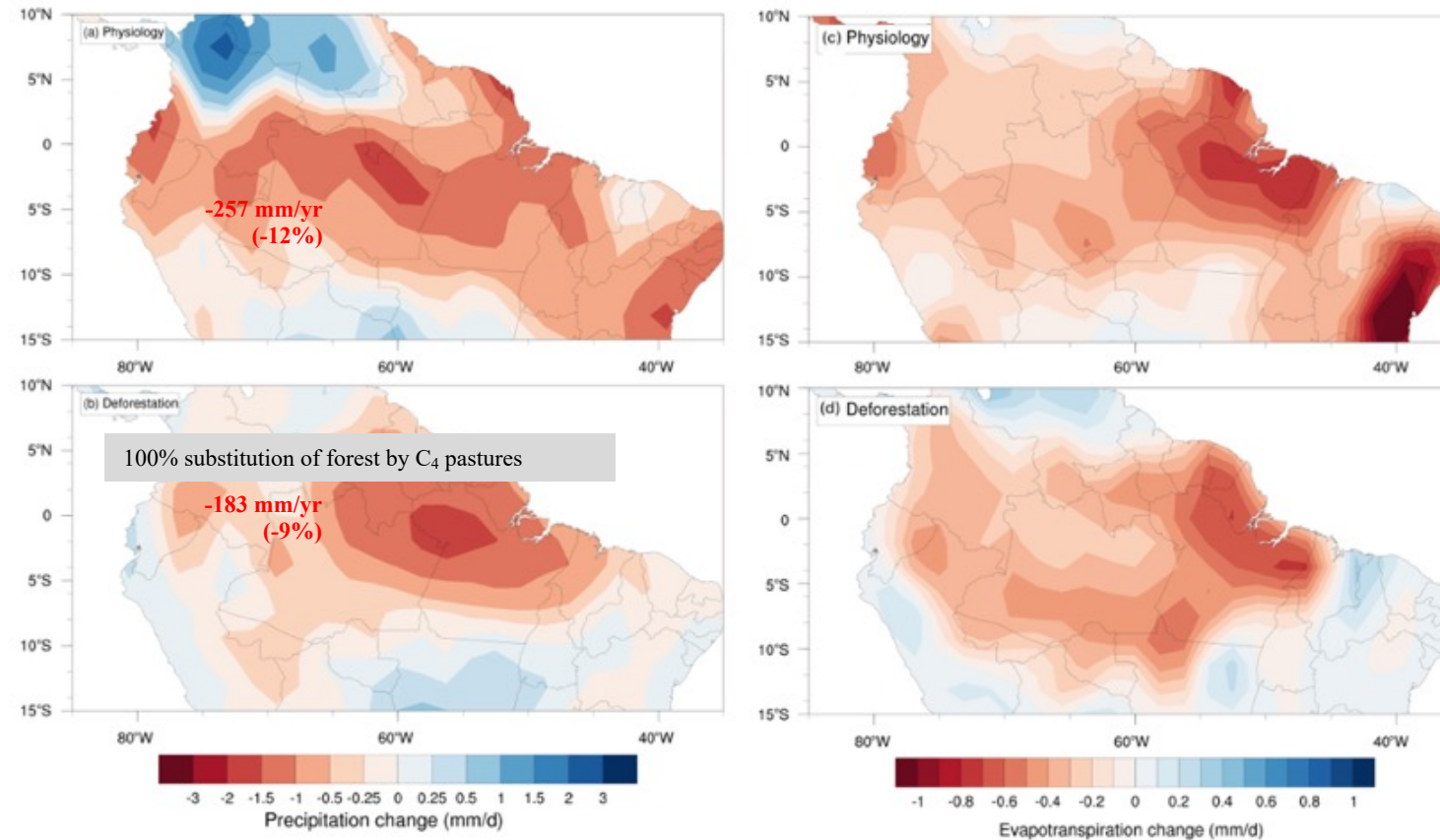
Fire C flux (g C m⁻² d⁻¹)

Gatti, L.V., Basso, L.S., Miller, J.B. *et al.* Amazonia as a carbon source linked to deforestation and climate change. *Nature* **595**, 388–393 (2021). <https://doi.org/10.1038/s41586-021-03629-6>

The effect of CO₂ can cause
 as much rainfall decrease as
 large-scale deforestation in
 the Amazon

CO₂ physiological effect can cause rainfall decrease as strong as large-scale deforestation in the Amazon

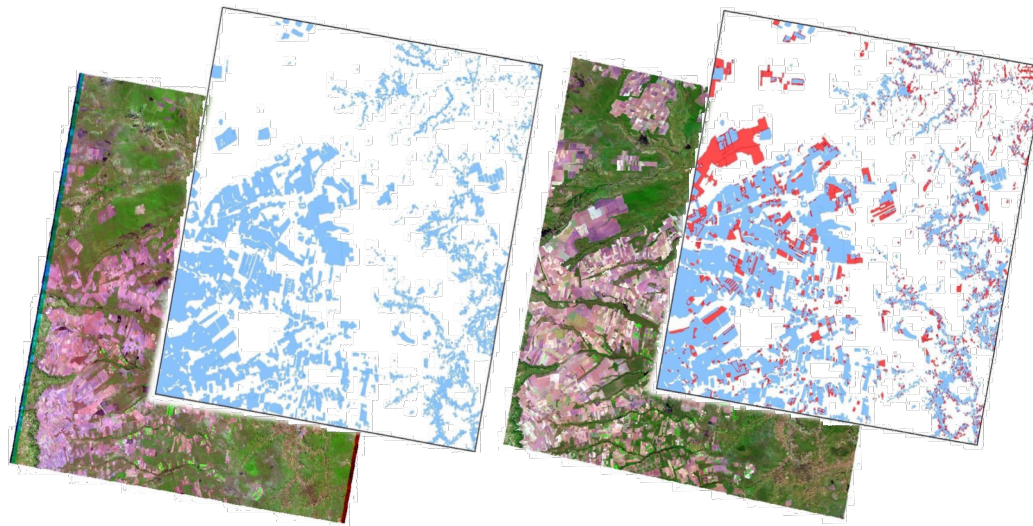
Gilvan Sampaio¹, Marília H. Shimizu¹, Carlos A. Guimarães-Júnior¹, Felipe Alexandre¹, Marcelo Guatara¹,
 Manoel Cardoso¹, Tomas F. Domingues², Anja Rammig³, Celso von Randow¹, Luiz F. C. Rezende¹, and
 David M. Lapola⁴



Incremental System

Almeida *et al.* 2021: **Methodology for Forest Monitoring used in PRODES and DETER projects**

Incremental system
Annual increase of deforestation
Medium spatial resolution (20-30 m)
Minimum Mapping Unit = 6.25 ha (AMZ) 1ha (Other biomes)
Visual Interpretation
Experienced team
Accuracy >93% (Maurano *et al.* 2019, Parente *et al.* 2021)



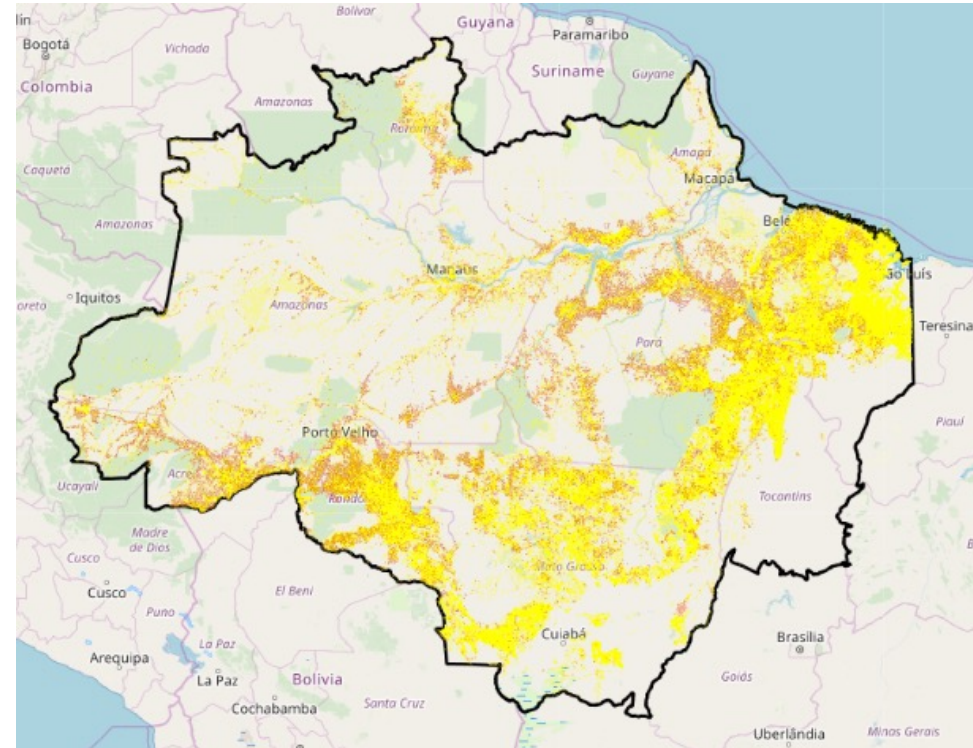
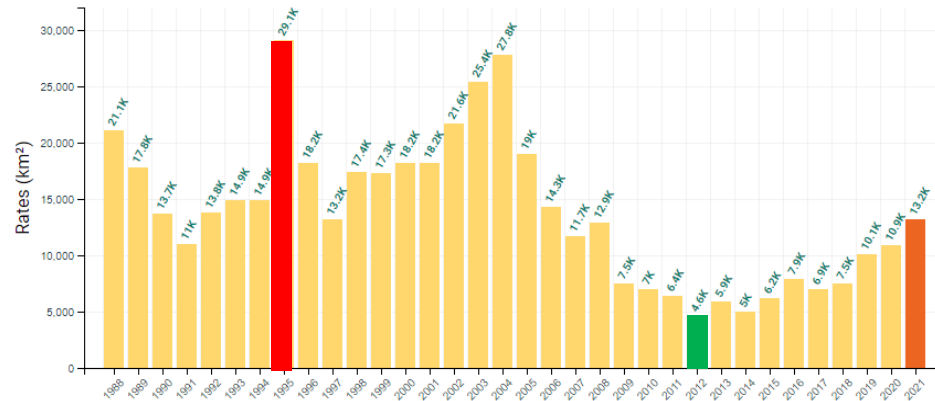
Previous year

Mapping year



Clear cut deforestation at 2021 > 820.000 km²
> 20% of Original Forest of Legal Amazon

Deforestation rates - Legal Amazon - States

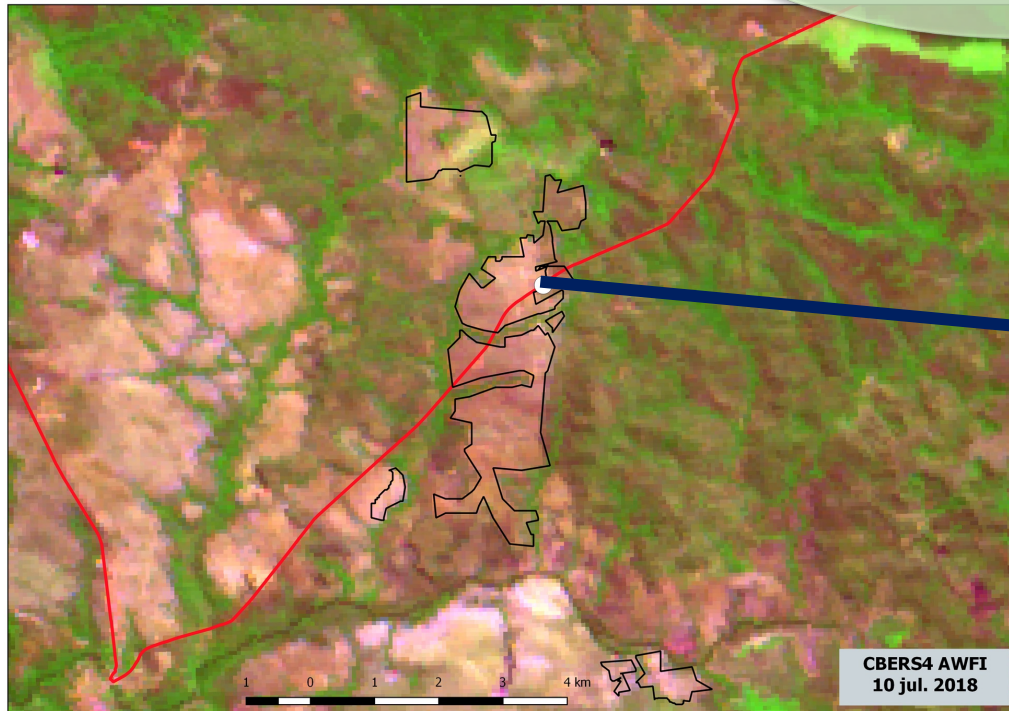


<http://terrabrasilis.dpi.inpe.br>

DETER: Daily monitoring

Incremental System

Daily increase of deforestation
 moderate-resolution (WFI ~ 60 m)
 Minimum Mapping Unit (MMU) 3 ha
 Visual Interpretation
 Team with very large experience



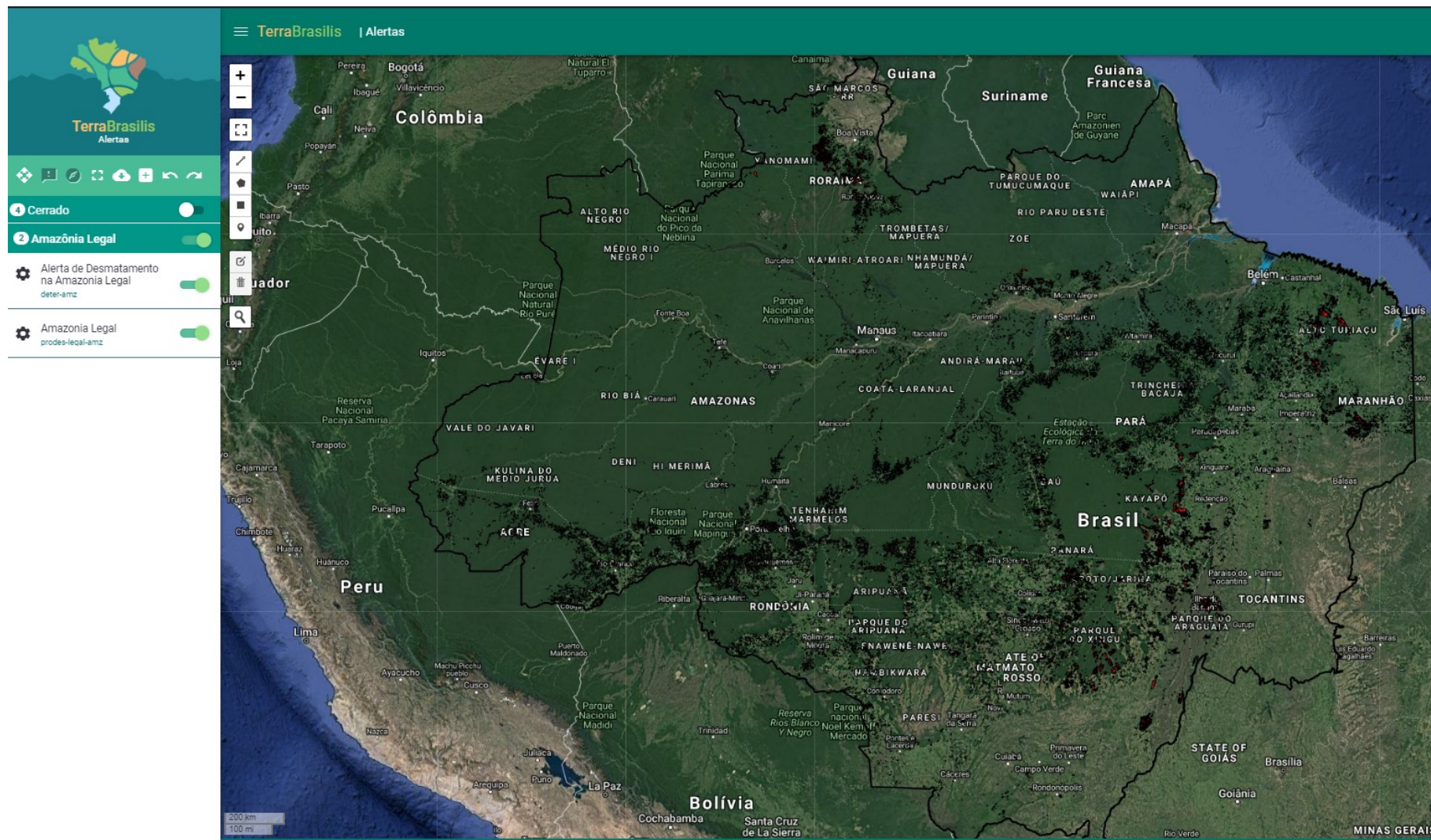
WFI July 10, 2018



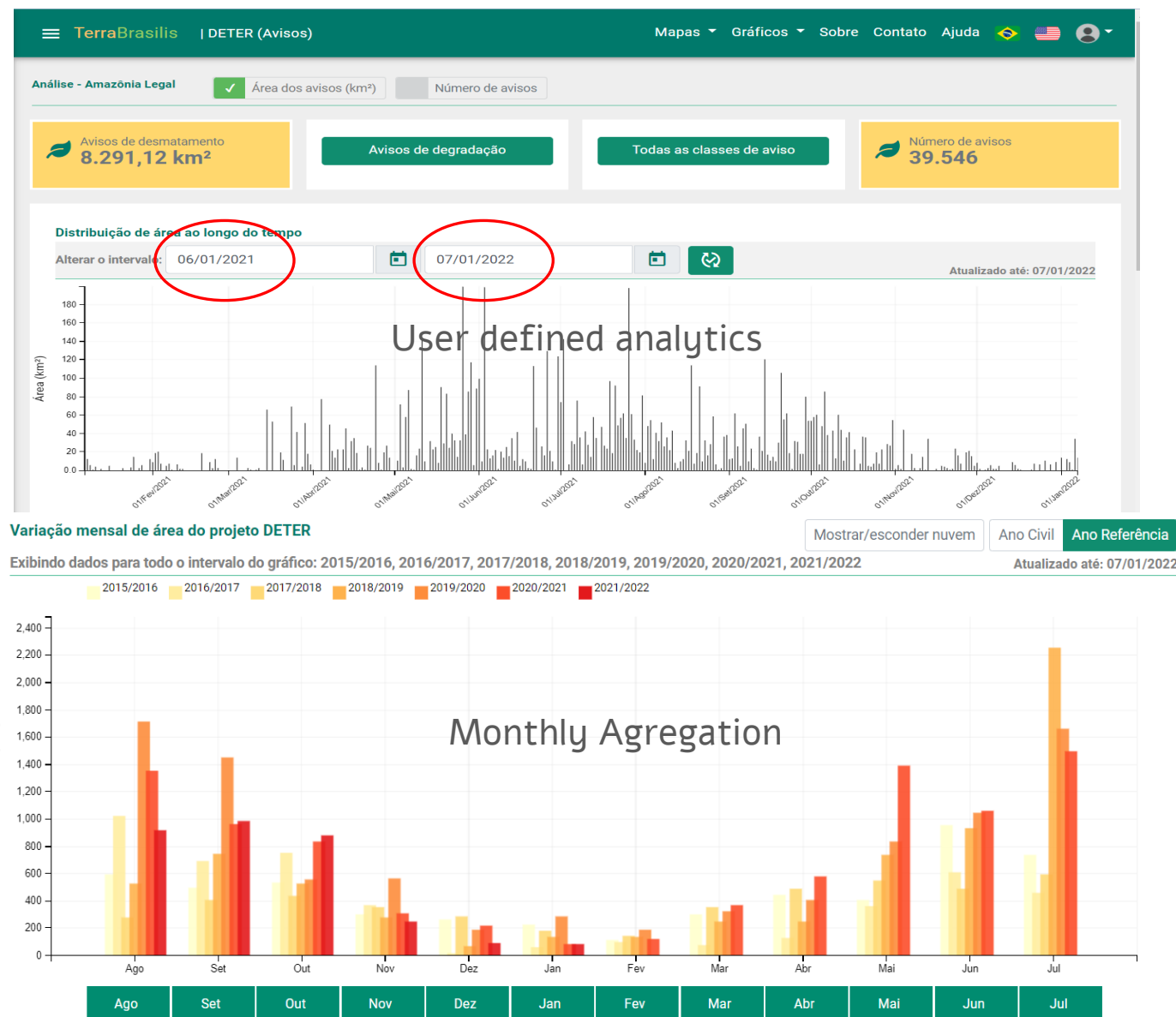
Field Mission: September 1, 2018

DETER: Daily monitoring

Explicit Spatial Information



<http://terrabilis.dpi.inpe.br>



<http://terrabilis.dpi.inpe.br>

PRODES/DETER processes: implications on data quality

Aspects of **PRODES/DETER** quality:

I - Mapping processes requirements

II - Validation

III - Transparency

Image selection and processing

Best detection period
Reduced cloud coverage

Visual interpretation

Multi-disciplinar and experienced team
Legend and protocol standardization
Ancillary data
Information about regional or local specificity

Auditing

Systematic process (100% of territory)
Visual inspection

Post-processing

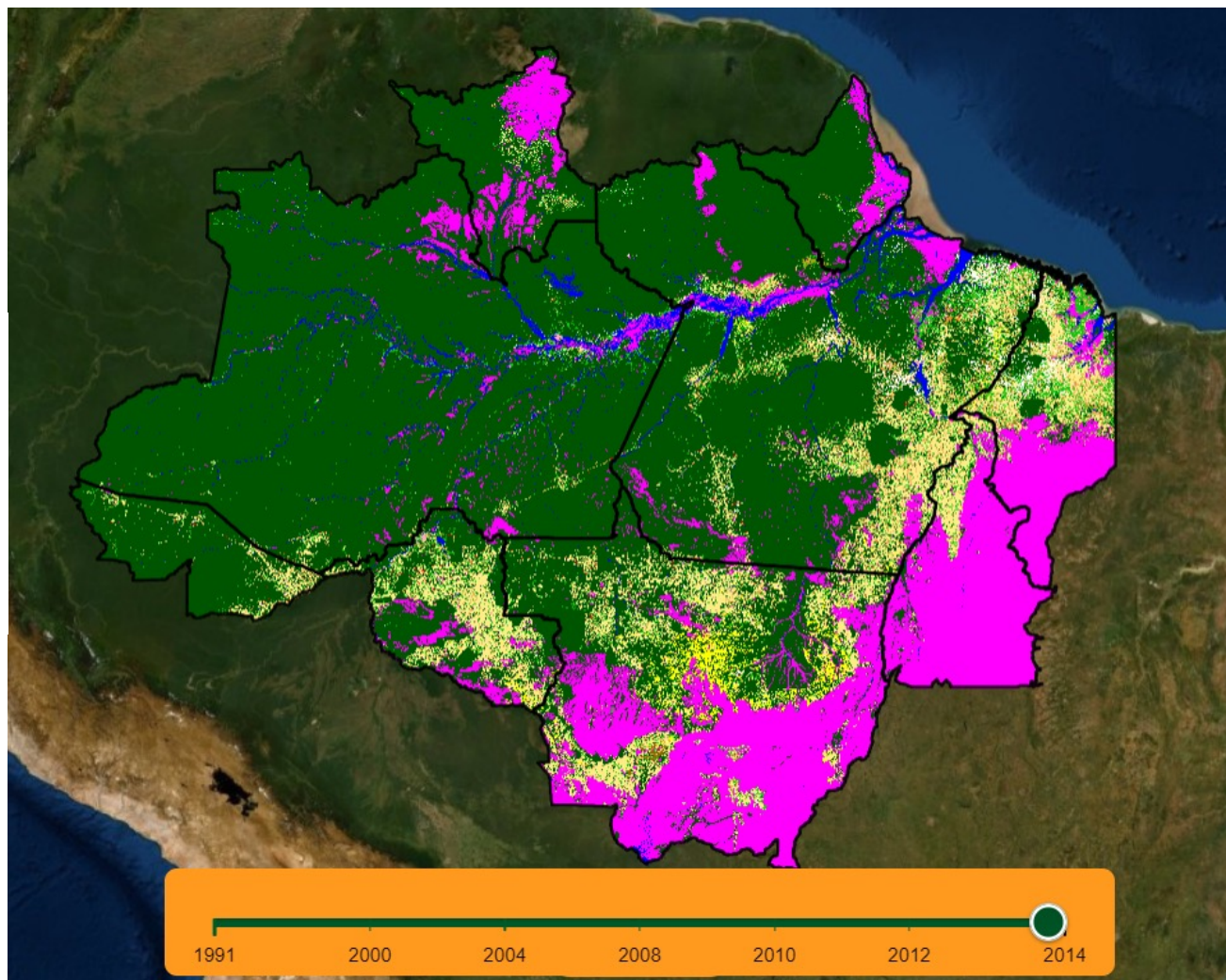
Consistency and processing rules checking

Map validation

Stratified and random sampling
External staff

Data Dissemination

Transparency (<http://terrabrasilis.dpi.inpe.br/>)
Technical reports
Scientific publications



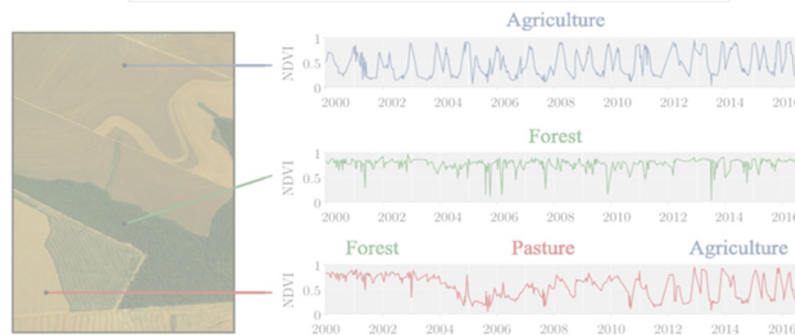
Vegetação Natural Florestal Primária	
Vegetação Natural Florestal Secundária	24,0%
Silvicultura	0,4%
Pastagem Cultivada Arbustiva	13,7%
Pastagem Cultivada Herbácea	49,6%
Cultura Agrícola Perene	0,2%
Cultura Agrícola Semiperene	0,3%
Cultura Agrícola Temporária	5,6%
Mineração	0,2%
Urbanizada	0,7%
Outros	0,9%
Não Observado	3,9%
Desflorestamento No Ano	0,6%
Não Floresta	
Corpo D'água	

Monitoring Challenges

Process automatization
Use of multi-sources data
New techniques for vegetation
change detection

X

Maintain the consistency
of the historical series



Enlarging the Image Set			
Sensor	Spatial Resolution (m)	Temporal Resolution (days)	Images/month
WFI/CBERS 4	64	5	6
WFI/CBERS 4A	55	5	6
WFI/Amazônia-1	60	5	6
OLI/Landsat 8	30	16	1
MSI/Sentinel 2	10	5	6
SAR/Sentinel 1	10	12	2

+



CBERS-4



AMAZÔNIA-1

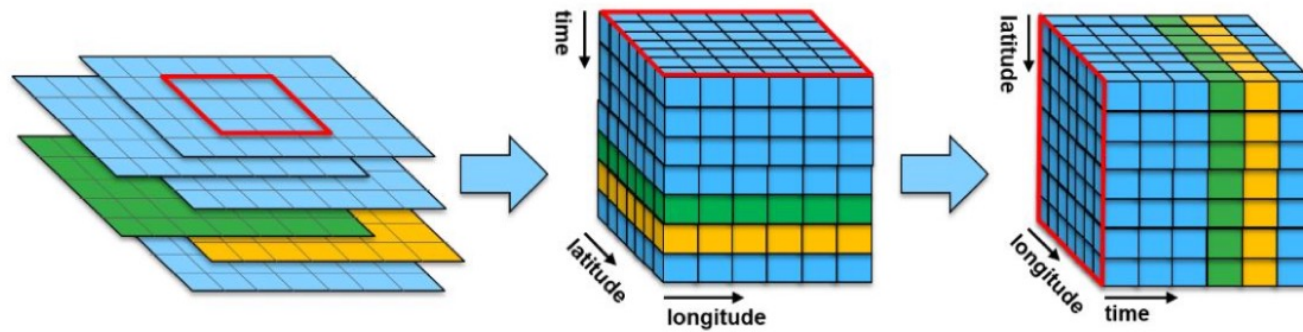


CBERS-4A

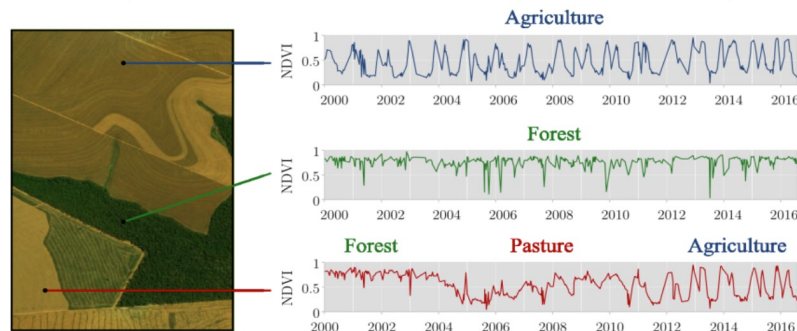
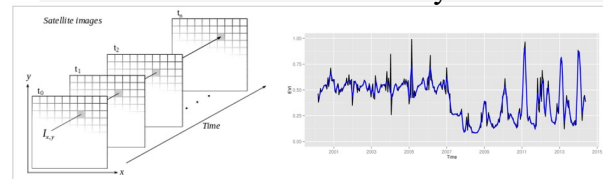
Only with 18 WFI monthly images

New technologies

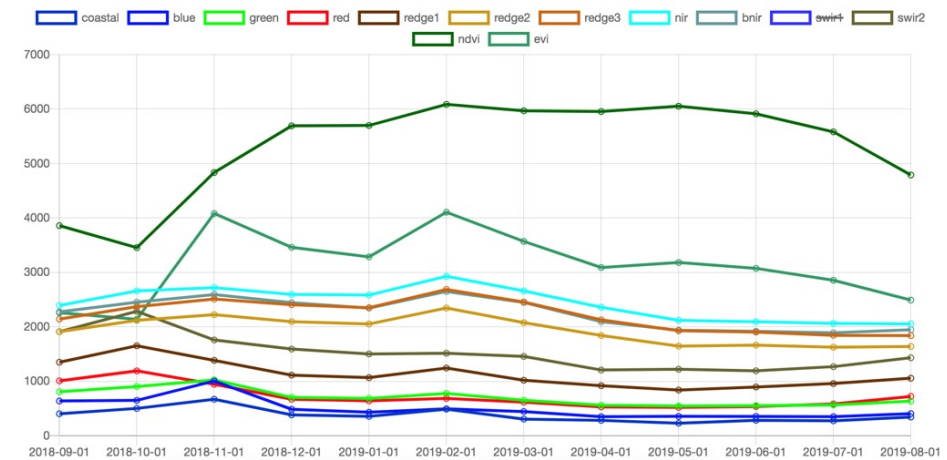
Brazilian Data Cube

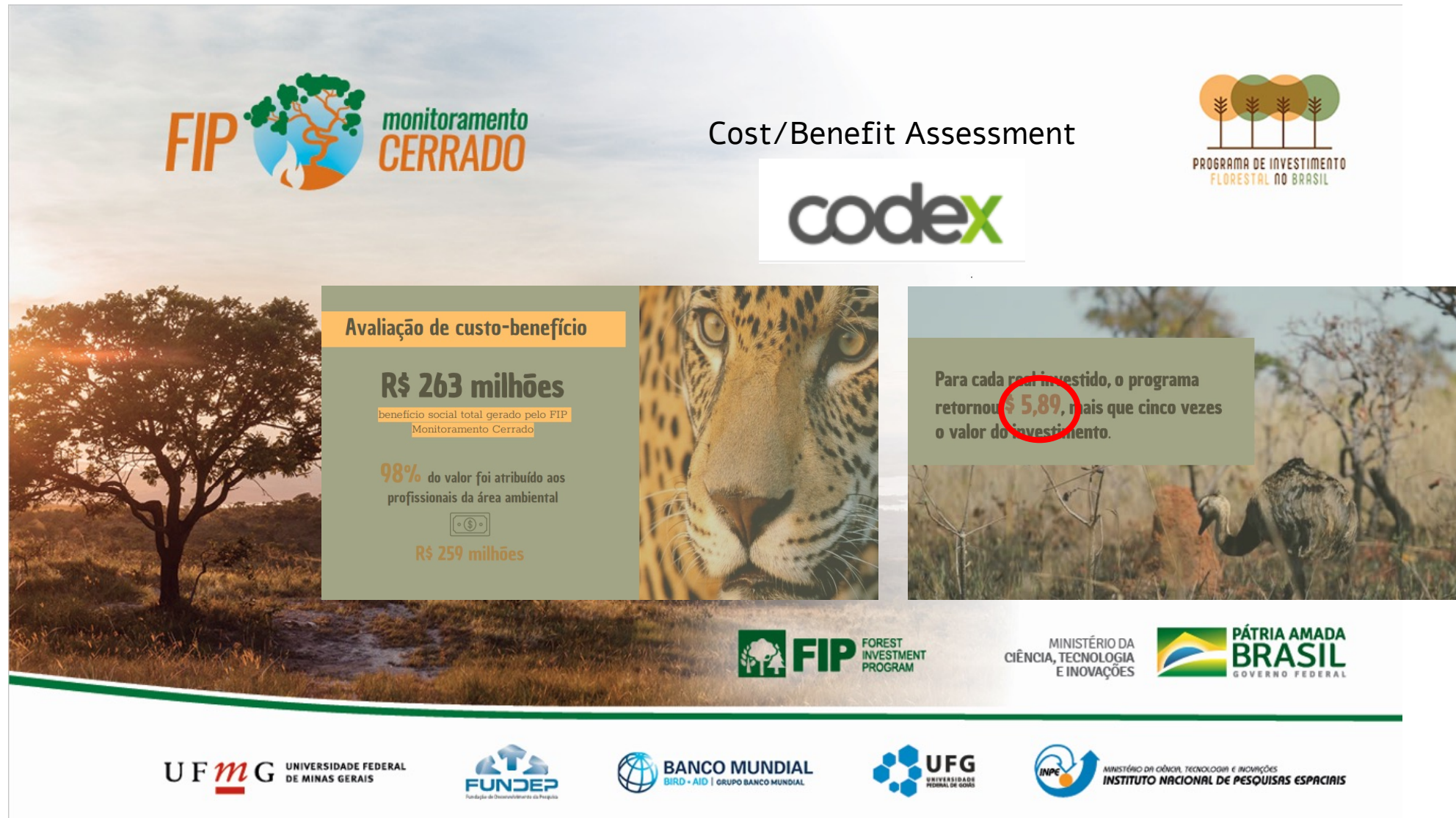


Time series analysis



Big Data





Thank you for your
attention!

Dr. Cláudio Almeida
claudio.almeida@inpe.br

www.inpe.br

www.gov.br/mcti

    /mctic



MINISTÉRIO DA
CIÊNCIA, TECNOLOGIA
E INOVAÇÕES



PÁTRIA AMADA
BRASIL
GOVERNO FEDERAL